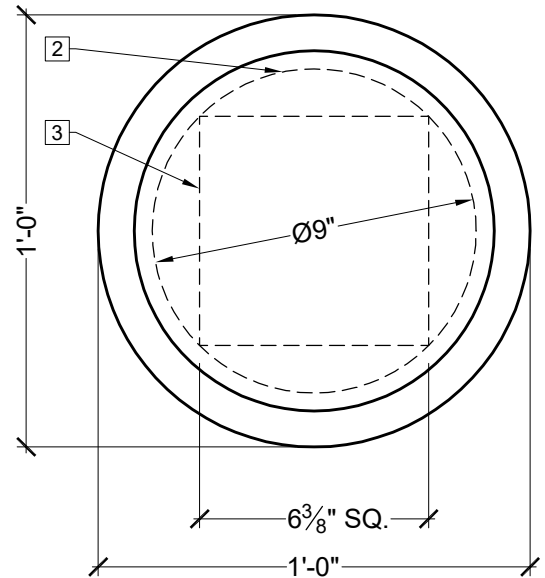
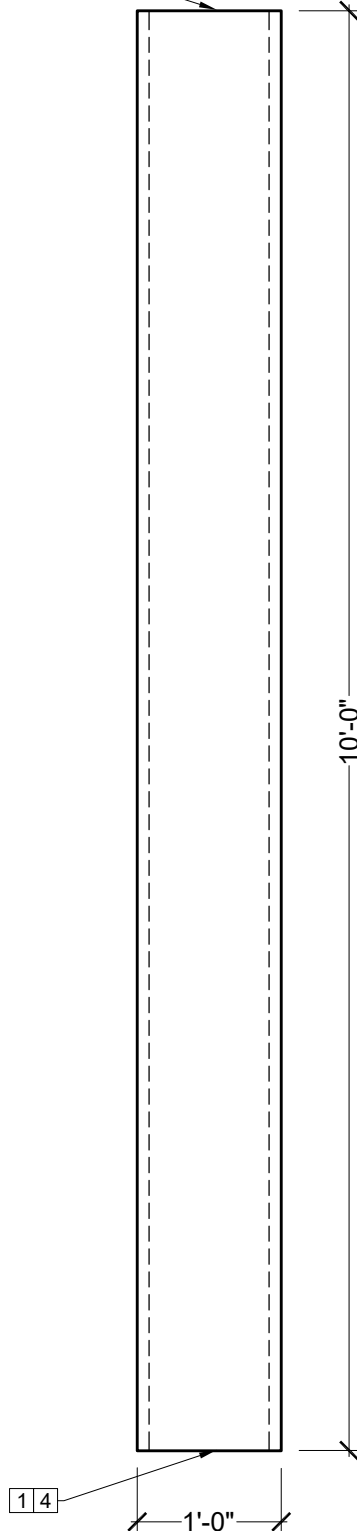


① 1 4 5 6



TOP VIEW
SCALE: 3/16" = 1"

*Confirm For Correctness
& Fax Back Within 24 Hrs.
To (204) 388-6710
Your Signature: _____*

BILL OF MATERIAL

- ① CLM300-12-10 - NON-STRUCTURAL COLUMN
MADE OF POLYURETHANE AND/OR PVC AT
SPECTIS' DISCRETION.

OPERATIONS

- ① UNFINISHED TOP AND BOTTOM.
② MAXIMUM ROUND INTERNAL MEMBER SIZE.
③ MAXIMUM SQUARE INTERNAL MEMBER SIZE.
④ INTERIOR HOLLOW WITH OPEN TOP/BOTTOM.
⑤ CAN BE SHIPPED SPLIT OR ASSEMBLED AT
CUSTOMER'S REQUEST UPON ORDERING.
⑥ IF SPLIT, ASSEMBLED AND PATCHED ON SITE
BY OTHERS.

GENERAL NOTES:

-ALL CUSTOM MANUFACTURED AND/OR
MODIFIED STANDARD PRODUCTS ARE
NON-RETURNABLE.

-SPECTIS ADHESIVE MUST BE USED ON ALL
BEDDING/BUTT JOINTS.



SPECTIS™
MOULDERS INC.
Custom Polyurethane Products

BOX 479
PEMBINA,
NORTH DAKOTA
58271-0479
11 C A

P.O. BOX 970
100 CEDAR DRIVE
NIVERVILLE, MANITOBA
CANADA R0A 1E0

PHONE: 204-388-6700
PHONE: 800-685-9981
FAX: 204-388-6710

GENERAL NOTES:

1. ALL PRODUCTS ARE DRAWN FOR
PRESENTATION PURPOSES ONLY.
IMAGE MAY VARY SLIGHTLY FROM
ACTUAL PART
2. DRAWING INTENT IS TO INDICATE
GENERAL ARRANGEMENT. DESIGN
AND INTENT OF WORK IS PARTLY
DIAGRAMMATIC.
3. SPECTIS RESERVES THE RIGHT
TO CHANGE ANY PRODUCT DESIGN
WITHOUT NOTICE.

CUSTOMER NAME: STANDARD PRODUCT			PART: CLM300-12-10
REFERENCE: COLUMN			SHEET: 01 OF 01
DRAWN BY: JK	DATE: 01/30/18	SCALE: 1/16" = 1"	REV: